



HAWKS NEST GOLF CLUB EXTERNAL WORKS

LOT 1 DP868540 SANDERLING AVENUE HAWKS NEST, NSW 2324



HAWKS NEST GOLF CLUB EXTERNAL WORKS

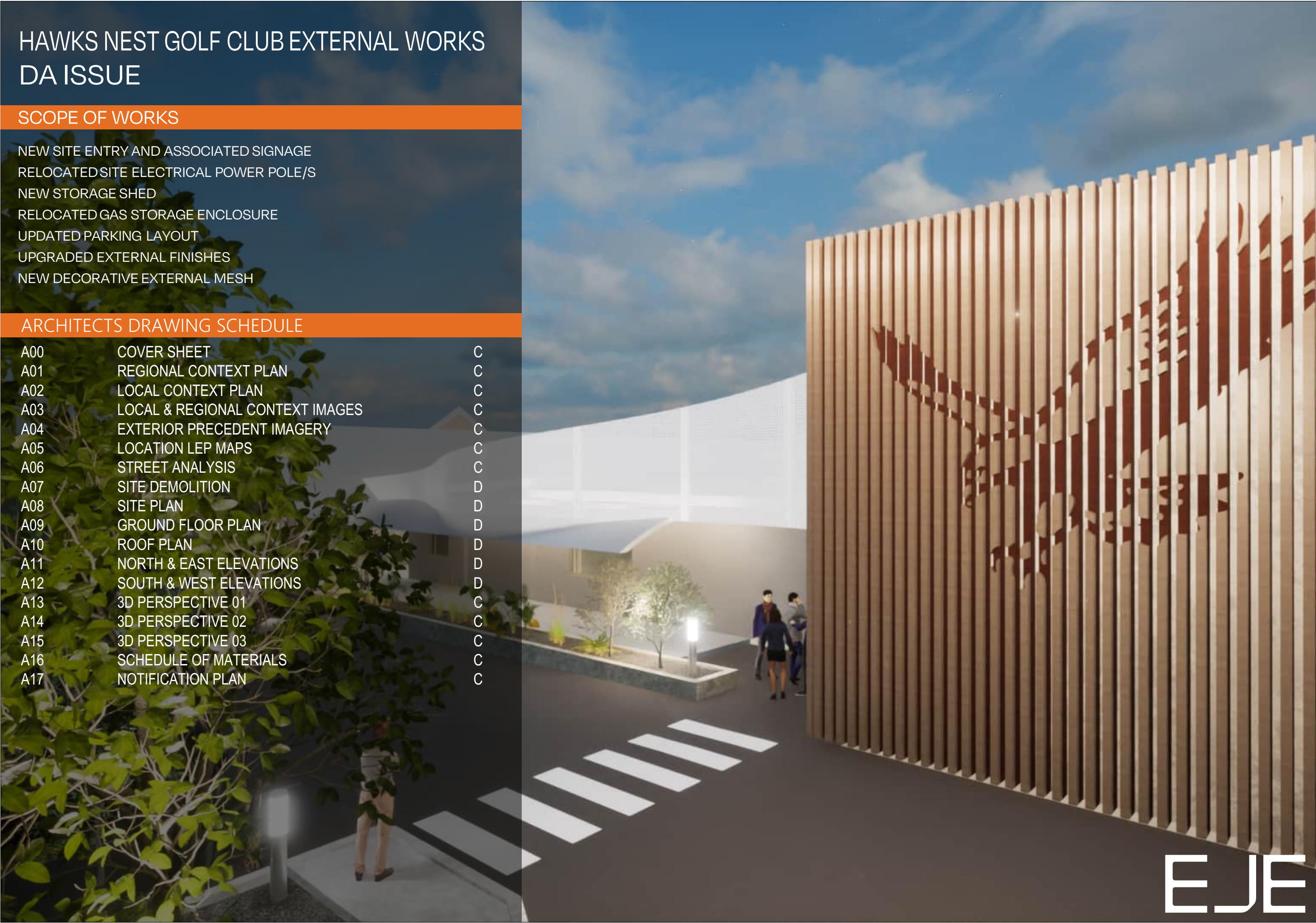
DA ISSUE

SCOPE OF WORKS

- NEW SITE ENTRY AND ASSOCIATED SIGNAGE
- RELOCATED SITE ELECTRICAL POWER POLE/S
- NEW STORAGE SHED
- RELOCATED GAS STORAGE ENCLOSURE
- UPDATED PARKING LAYOUT
- UPGRADED EXTERNAL FINISHES
- NEW DECORATIVE EXTERNAL MESH

ARCHITECTS DRAWING SCHEDULE

A00	COVER SHEET	C
A01	REGIONAL CONTEXT PLAN	C
A02	LOCAL CONTEXT PLAN	C
A03	LOCAL & REGIONAL CONTEXT IMAGES	C
A04	EXTERIOR PRECEDENT IMAGERY	C
A05	LOCATION LEP MAPS	C
A06	STREET ANALYSIS	C
A07	SITE DEMOLITION	D
A08	SITE PLAN	D
A09	GROUND FLOOR PLAN	D
A10	ROOF PLAN	D
A11	NORTH & EAST ELEVATIONS	D
A12	SOUTH & WEST ELEVATIONS	D
A13	3D PERSPECTIVE 01	C
A14	3D PERSPECTIVE 02	C
A15	3D PERSPECTIVE 03	C
A16	SCHEDULE OF MATERIALS	C
A17	NOTIFICATION PLAN	C





REGIONAL CONTEXT

SIGNIFICANCE

- Hawks Nest emerged as a service centre for the local fishing and timber industries, though emerged as a family holiday destination in the 1950's
- The town was originally named after a large nest of a hawk that was used as a navigational marker in pre-satellite times

POPULATION

- Approximately 96,000 people live in the MidCoast area

FACILITIES & ATTRACTIONS

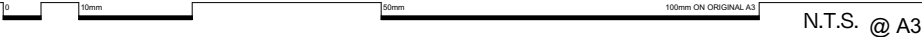
- | | |
|-----|--|
| 1. | Hawks Nest Golf Course & Club |
| 2. | Tea Gardens Hawks Nest Surf Life Saving Club |
| 3. | Bennets Beach |
| 4. | Jimmys Beach |
| 5. | Myall River |
| 6. | Great Mermaid Beach |
| 7. | Yacaaba Head |
| 8. | Winda Woppa |
| 9. | Corrie Island |
| 10. | Tea Gardens |
| 11. | Shoal Bay |
| 12. | Tomaree Head |



HAWKS NEST GOLF CLUB EXTERNAL WORKS : REGIONAL CONTEXT PLAN

11953 - A01 - Rev C - 21 February 2025

Confidential. Copyright EJE.
Nominated Architect - Bernard Collins No. 4438 (NSW ARB)





LOCAL CONTEXT

HISTORICAL SIGNIFICANCE

- The site is located on the traditional land of the Worimi people, whom would seasonally gather in and around Hawks Nest to hold celebrations and ceremonies, and make use of the surrounding natural resources.

POPULATION

- Approximately 4,600 people live in the Hawks Nest & Tea Gardens area

FACILITIES & ATTRACTIONS

- 1.** Hawks Nest Golf Course
- 2.** Tea Gardens Hawks Nest Surf Life Saving Club
- 3.** Bennets Beach
- 4.** Myall River
- 5.** Hawks Nest Boat Ramp
- 6.** Moira Parade Reserve
- 7.** Myall Park Tennis Park
- 8.** Myall Park
- 9.** Town Centre (IGA, Medical Centre, Newsagency, Bakery, Takeaway, Cafe, Pharmacy etc.)
- 10.** Providence Bay Park
- 11.** Reflections Holiday Park Hawks Nest
- 12.** Tea Gardens Hawks Nest Preschool



HAWKS NEST GOLF CLUB EXTERNAL WORKS : LOCAL CONTEXT PLAN

11953 - A02 - Rev C - 21 February 2025

Confidential. Copyright EJE.
Nominated Architect - Bernard Collins No. 4438 (NSW ARB)



N.T.S. @ A3





LOCAL AND REGIONAL CONTEXT

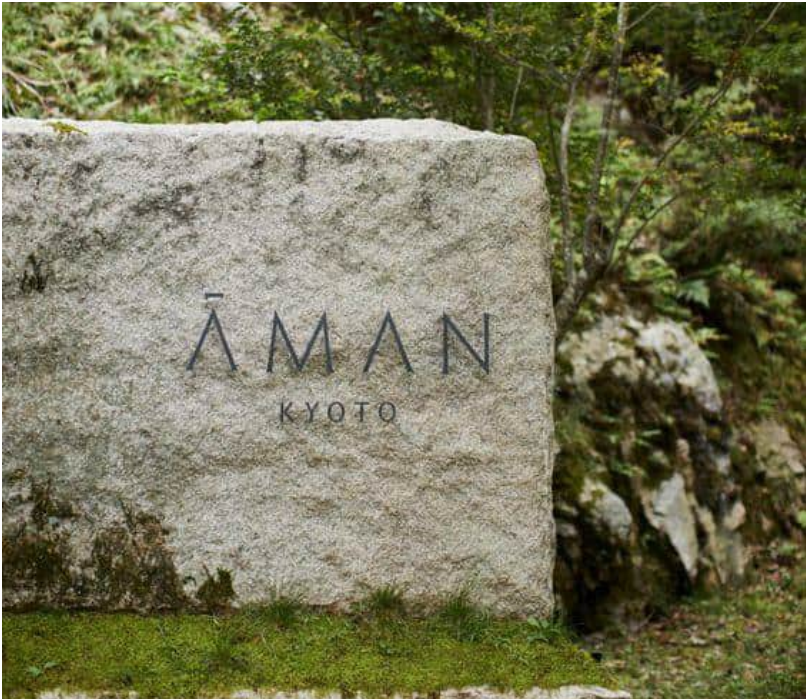
1. Yacaaba Headland
2. Jimmys Beach
3. Myall River
4. Hawks Nest Golf Course/Club
5. Bennets Beach
6. Yacaaba Headland Walking Track
7. Mumm's On The Myall
8. Tea Gardens Swimming Pool
9. Myall River Luxury Campground
10. Tea Gardens Boatshed
11. Bennets Beach 4WD
12. Tea Gardens Ferry
13. Mungo Brush Rainforest
14. Port Stephens Whale & Dolphin Watching
15. Snorkelling at Jimmy's Beach
16. Little Beach Boathouse

HAWKS NEST GOLF CLUB EXTERNAL WORKS : LOCAL & REGIONAL CONTEXT IMAGES

11953 - A03 - Rev C - 21 February 2025

Confidential. Copyright EJE.
Nominated Architect - Bernard Collins No. 4438 (NSW ARB)

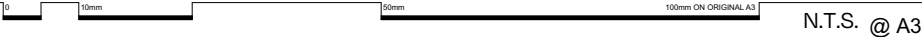
0 10mm 50mm 100mm ON ORIGINAL A3 N.T.S. @ A3



HAWKS NEST GOLF CLUB EXTERNAL WORKS : EXTERIOR PRECEDENT IMAGERY

11953 - A04 - Rev C - 21 February 2025

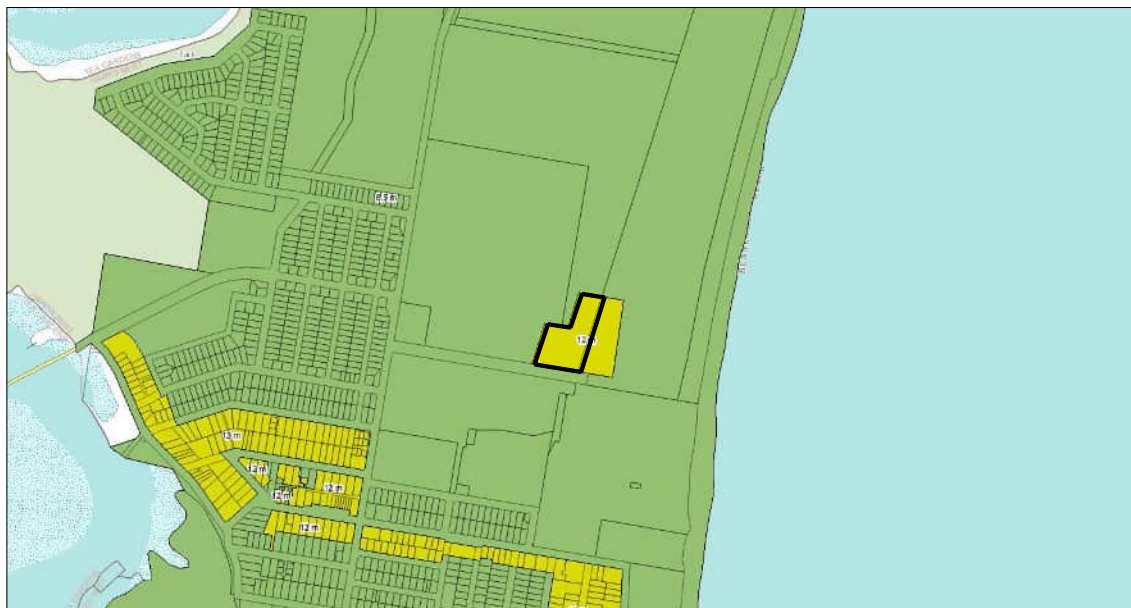
Confidential. Copyright EJE.
Nominated Architect - Bernard Collins No. 4438 (NSW ARB)





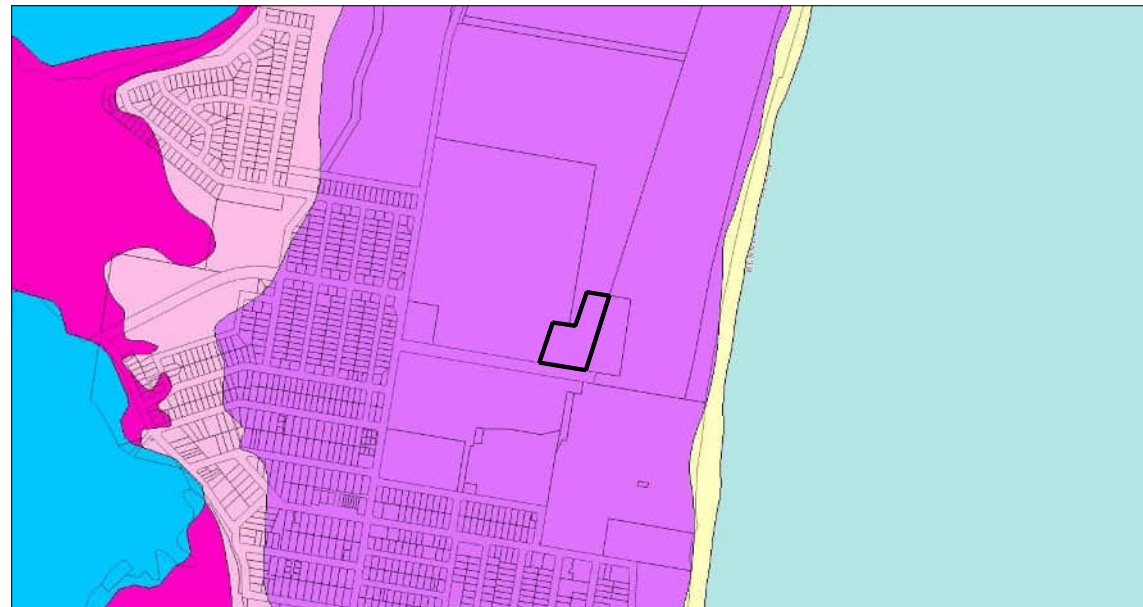
LEP ZONING

- R3 MEDIUM DENSITY RESIDENTIAL
- R2 LOW DENSITY RESIDENTIAL
- MU1 MIXED USE
- C2 ENVIRONMENTAL CONSERVATION
- RE1 PUBLIC RECREATION
- RE2 PRIVATE RECREATION
- C1 NATIONAL PARKS & NATURE RESERV.
- C3 ENVIRONMENTAL MANAGEMENT



LEP HEIGHT LIMITS

- 12M
- 8.5M



LEP ACID SULPHATE SOIL CLASS

- CLASS 1
- CLASS 2
- CLASS 3
- CLASS 4
- CLASS 5



LEP BUSHFIRE RISK

- VEGETATION CATEGORY 1
- VEGETATION CATEGORY 2
- VEGETATION CATEGORY 3
- VEGETATION BUFFER



HAWKS NEST GOLF CLUB EXTERNAL WORKS : LOCATION LEP MAPS

11953 - A05 - Rev C - 21 February 2025

Confidential. Copyright EJE.
Nominated Architect - Bernard Collins No. 4438 (NSW ARB)

0 10mm 50mm 100mm ON ORIGINAL A3 N.T.S. @ A3





1 - SANDERLING AVENUE LOOKING EAST



2 - SANDERLING AVENUE LOOK NORTH EAST



3 - SANDERLING AVNUE LOOKING NORTH WEST



4 - SANDERLING AVENUE LOOKING SOUTH WEST



5 - SANDERLING AVENUE LOOKING NORTH EAST



6 - SANDERLING AVENUE LOOKING NORTH



7 - SANDERLING AVENUE LOOKING SOUTH



8 - SANDERLING AVENUE LOOKING EAST



SANDERLING AVENUE

- Access road to site running east to west
- Access road to Bennets Beach
- Access road to Reflections Holiday Parks - Hawks Nest



HAWKS NEST GOLF CLUB EXTERNAL WORKS : STREET ANALYSIS

11953 - A06 - Rev C - 21 February 2025

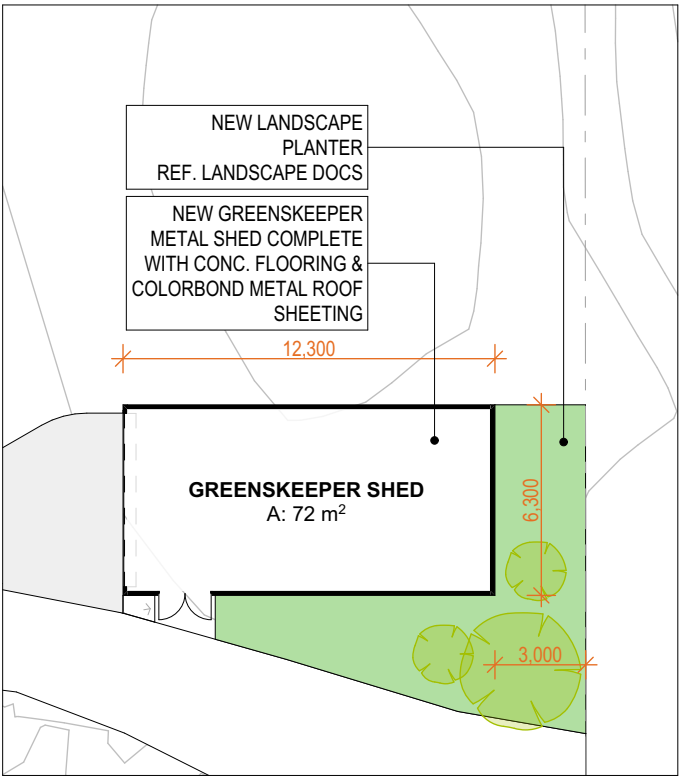
Confidential. Copyright EJE.
Nominated Architect - Bernard Collins No. 4438 (NSW ARB)

0 10mm 50mm 100mm ON ORIGINAL A3 N.T.S. @ A3





Confidential. Copyright EJE.
Nominated Architect - Bernard Collins No. 4438 (NSW ARB)



GREENSKEEPER SHED FLOOR PLAN 1:250



HAWKS NEST GOLF CLUB EXTERNAL WORKS : GROUND FLOOR PLAN

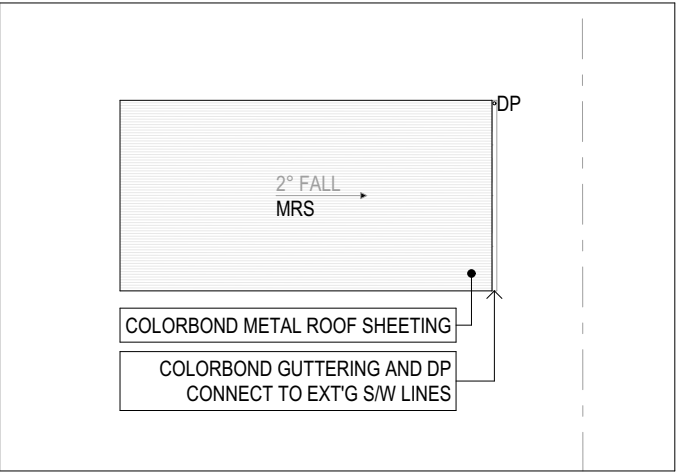
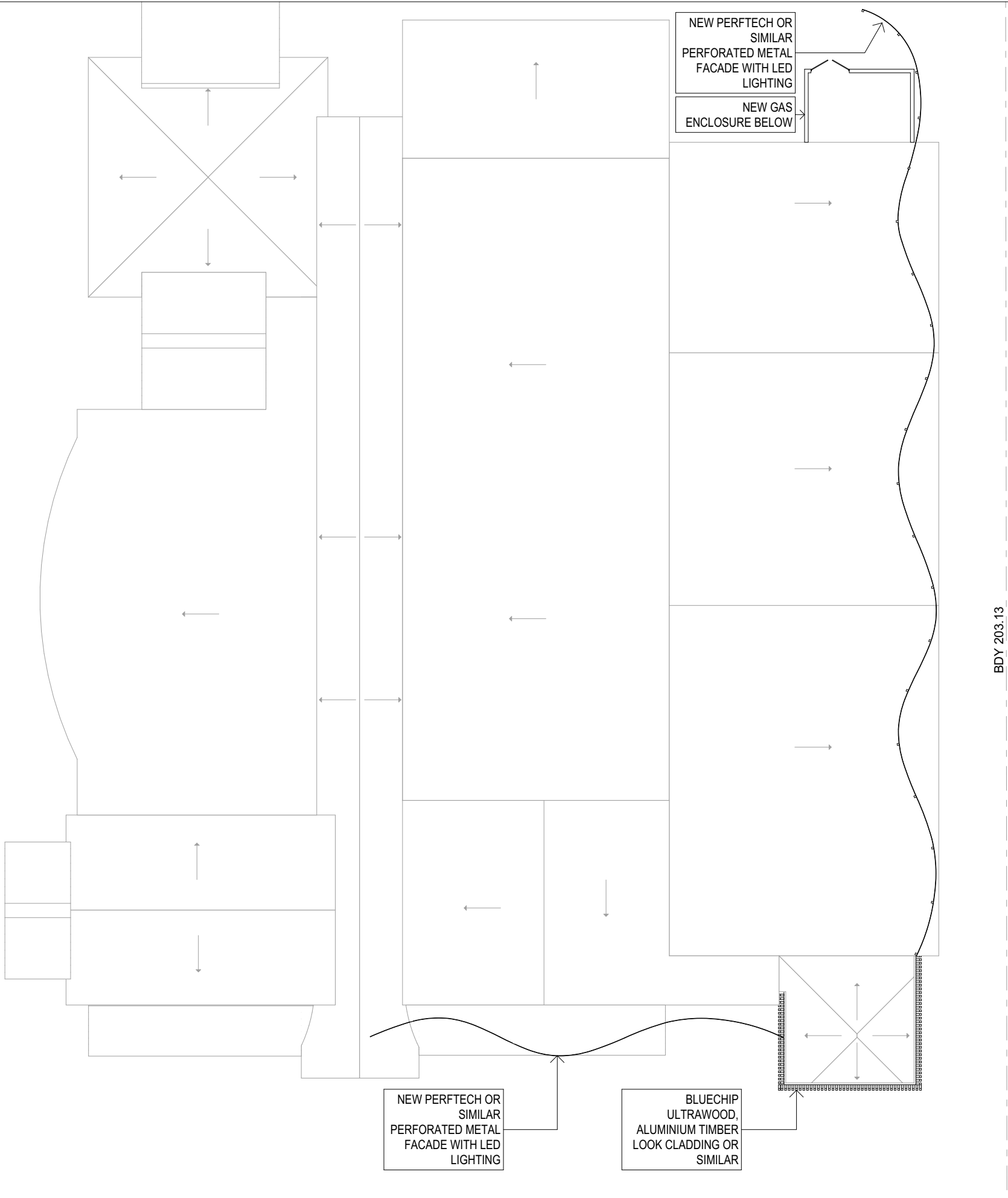
11953 - A09 - Rev D - 21 February 2025

Confidential. Copyright EJE.
Nominated Architect - Bernard Collins No. 4438 (NSW ARB)



1:250 @ A3





GREENSKEEPER SHED ROOF PLAN 1:250



HAWKS NEST GOLF CLUB EXTERNAL WORKS : ROOF PLAN

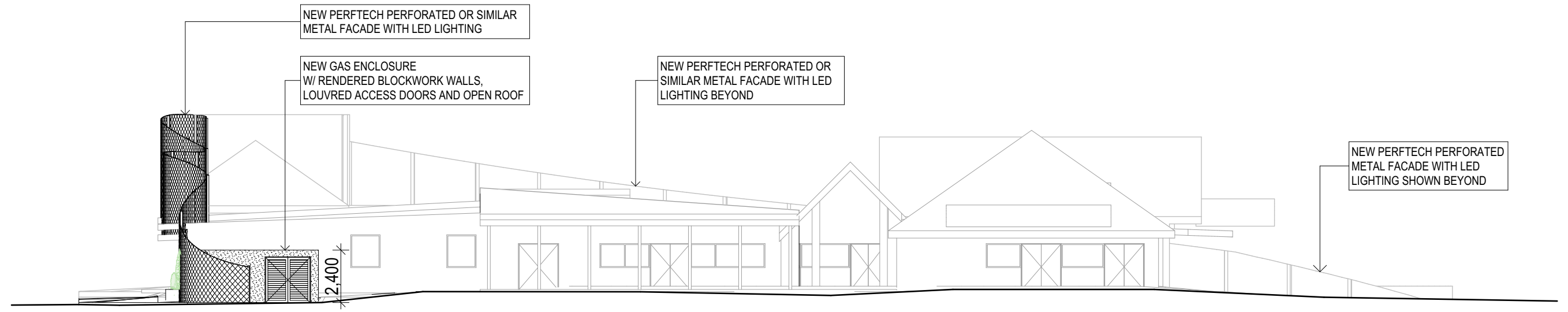
11953 - A10 - Rev D - 21 February 2025

Confidential. Copyright EJE.
Nominated Architect - Bernard Collins No. 4438 (NSW ARB)



1:250 @ A3

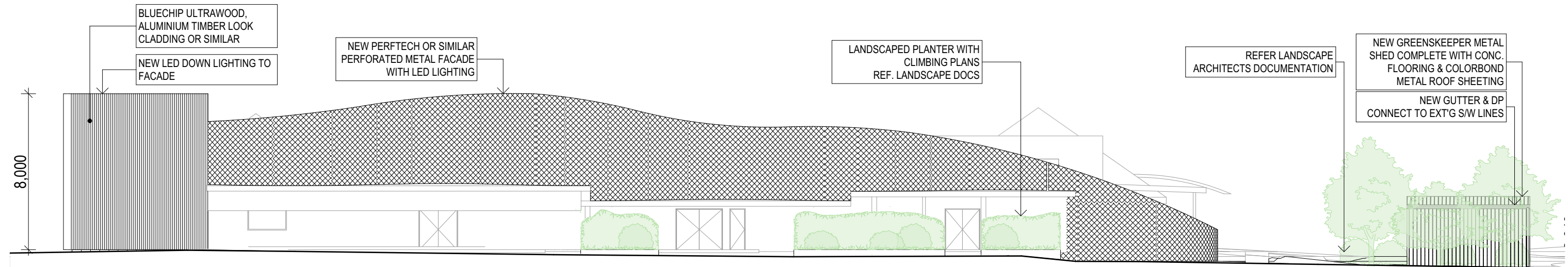




E01

NORTH ELEVATION

1:200



E02

EAST ELEVATION

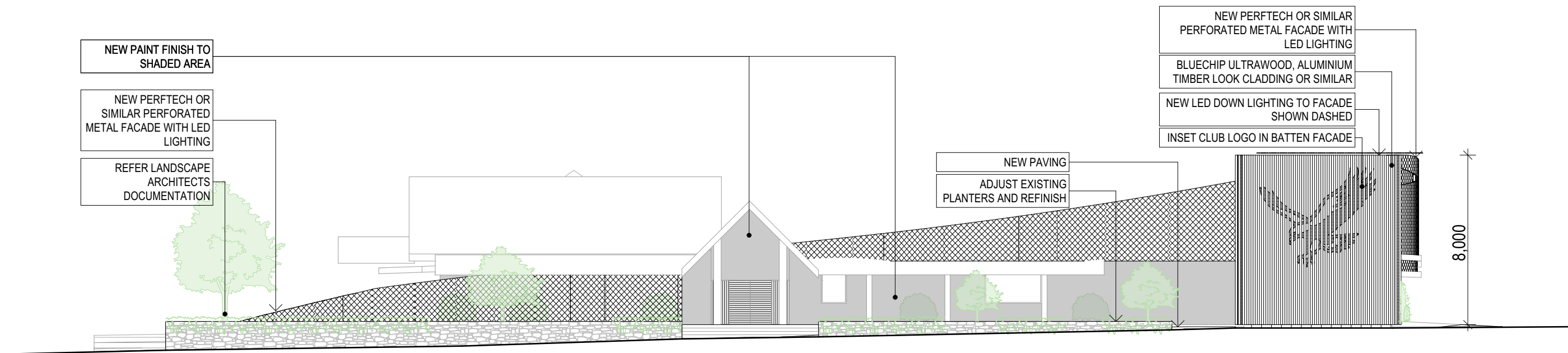
1:200

HAWKS NEST GOLF CLUB EXTERNAL WORKS : NORTH & EAST ELEVATIONS

11953 - A11 - Rev D - 21 February 2025

Confidential. Copyright EJE.
Nominated Architect - Bernard Collins No. 4438 (NSW ARB)

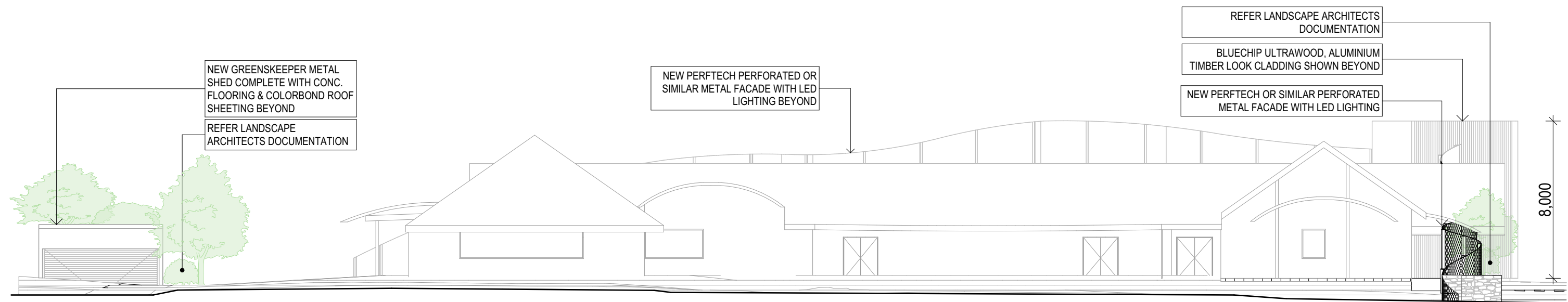
0 10mm 50mm 100mm ON ORIGINAL A3 1:200 @ A3



E03

SOUTH ELEVATION

1:200



E04

NORTH ELEVATION

1:200

HAWKS NEST GOLF CLUB EXTERNAL WORKS : SOUTH & WEST ELEVATIONS

11953 - A12 - Rev D - 21 February 2025

Confidential. Copyright EJE.
Nominated Architect - Bernard Collins No. 4438 (NSW ARB)

0 10mm 50mm 100mm ON ORIGINAL A3 1:200 @ A3





HAWKS NEST GOLF CLUB EXTERNAL WORKS : 3D PERSPECTIVE 01

11953 - A13 - Rev C - 21 February 2025

Confidential. Copyright EJE.
Nominated Architect - Bernard Collins No. 4438 (NSW ARB)

0 10mm 50mm 100mm ON ORIGINAL A3 N.T.S. @ A3



HAWKS NEST GOLF CLUB EXTERNAL WORKS : 3D PERSPECTIVE 02

11953 - A14 - Rev C - 21 February 2025

Confidential. Copyright EJE.
Nominated Architect - Bernard Collins No. 4438 (NSW ARB)

0 10mm 50mm 100mm ON ORIGINAL A3 N.T.S. @ A3



HAWKS NEST GOLF CLUB EXTERNAL WORKS : 3D PERSPECTIVE 03

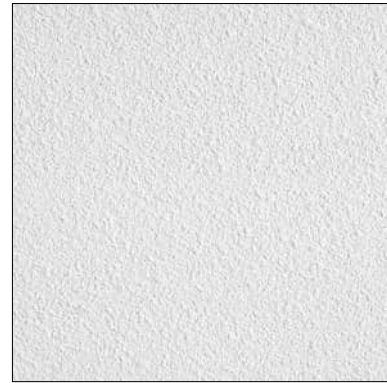
11953 - A15 - Rev C - 21 February 2025

Confidential. Copyright EJE.
Nominated Architect - Bernard Collins No. 4438 (NSW ARB)

0 10mm 50mm 100mm ON ORIGINAL A3 N.T.S. @ A3



1 EXTERNAL MESH



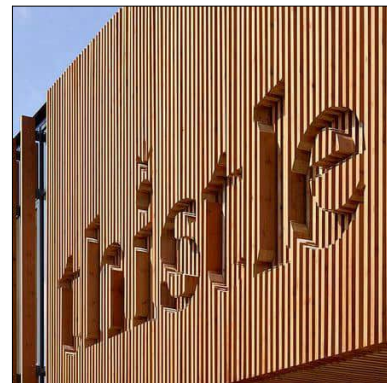
2 TEXTURED PAINT



3 CORTEN STEEL



4 SANDSTONE WALL



5 BATTEN CLADDING



6 PLANTING



HAWKS NEST GOLF CLUB EXTERNAL WORKS : SCHEDULE OF MATERIALS

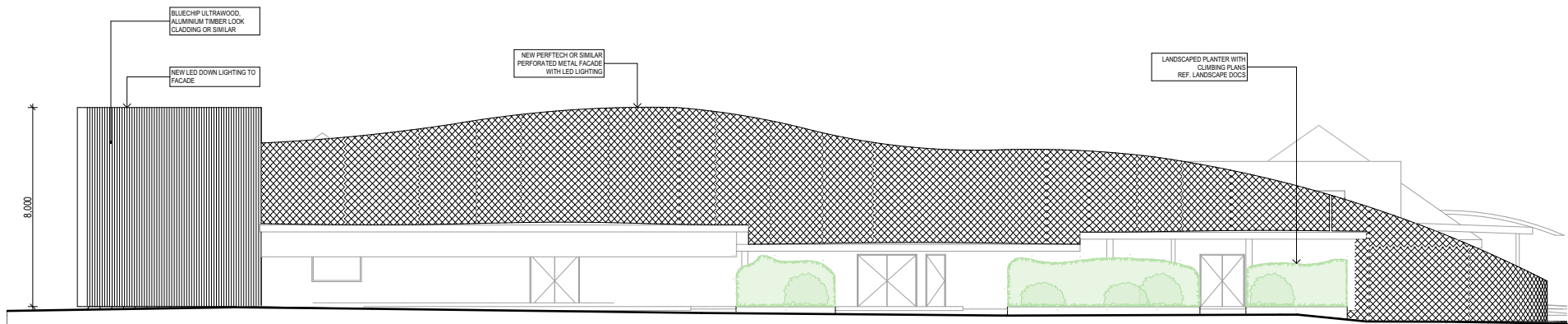
11953 - A16 - Rev C - 21 February 2025

Confidential. Copyright EJE.
Nominated Architect - Bernard Collins No. 4438 (NSW ARB)

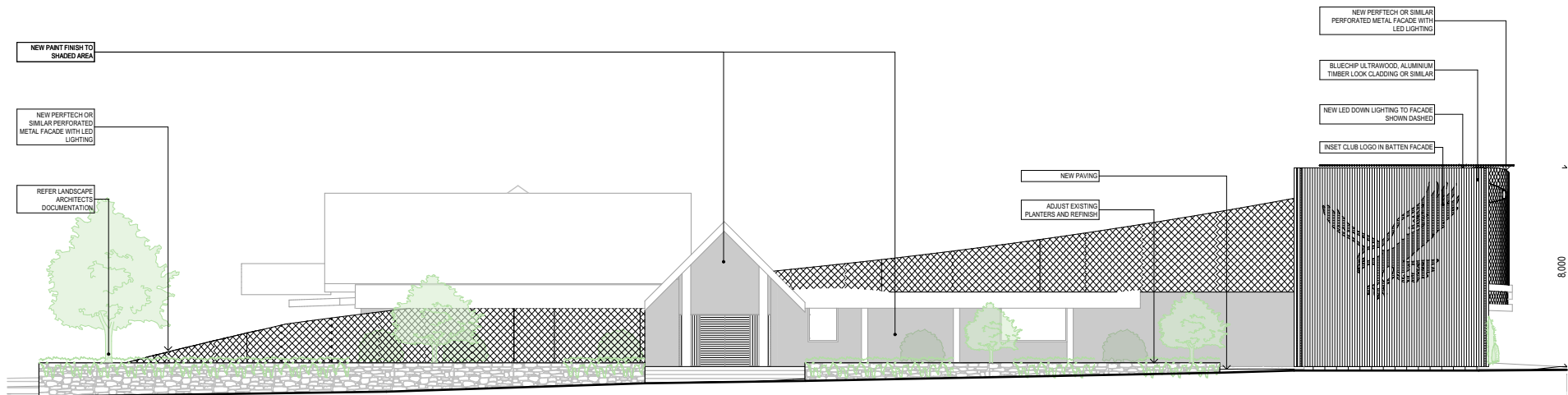
0 10mm 50mm 100mm ON ORIGINAL A3 N.T.S. @ A3



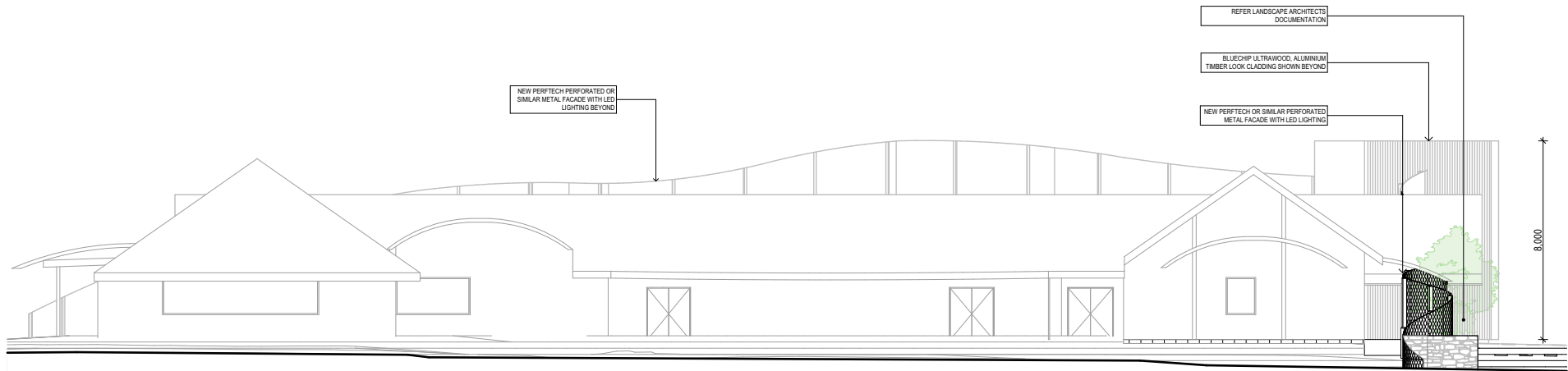
E01 CLUB NORTH ELEVATION 1:250



E02 CLUB EAST ELEVATION 1:250



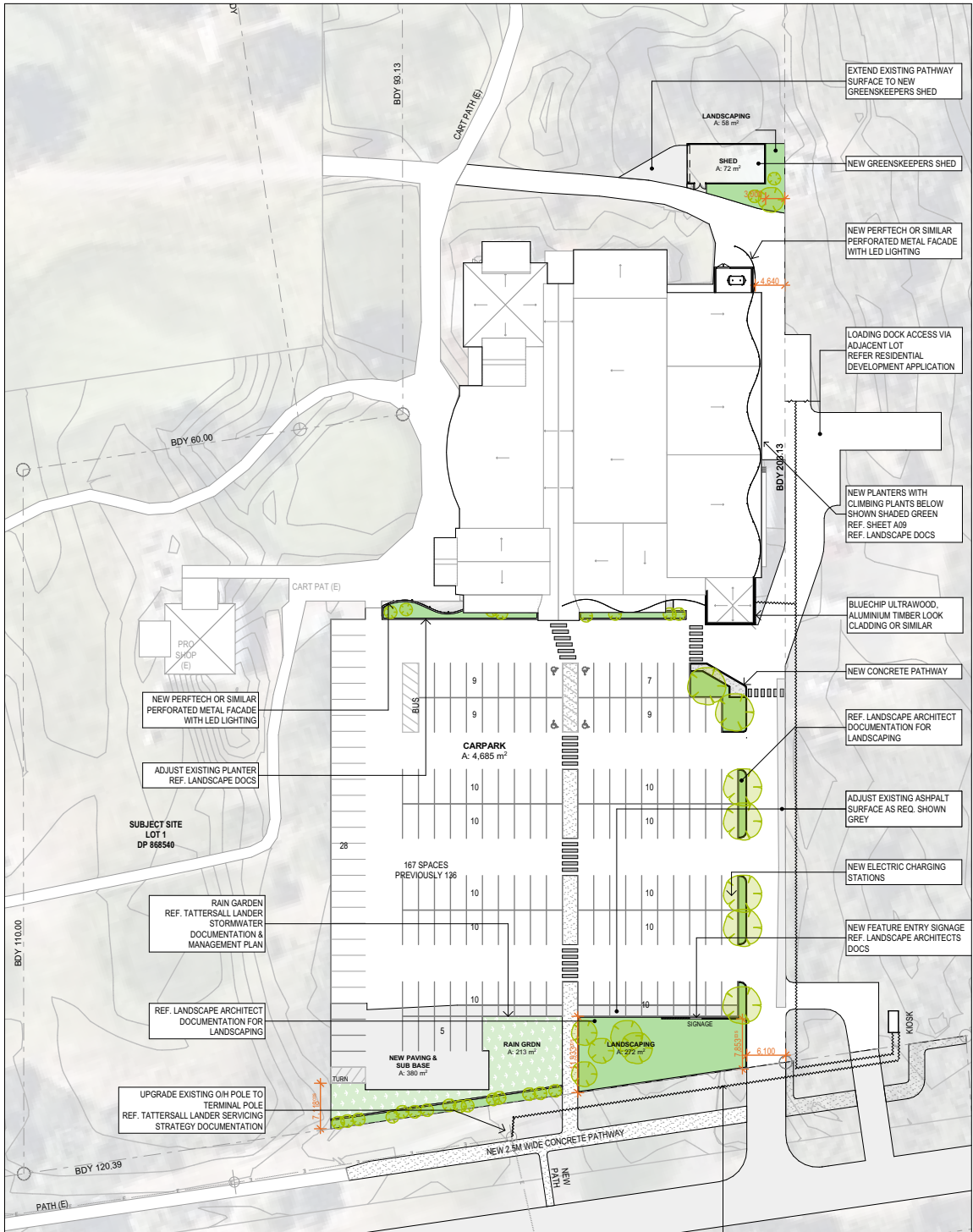
E03 CLUB SOUTH ELEVATION 1:250



E04 CLUB WEST ELEVATION 1:250



3D PERSPECTIVE



SITE PLAN CLUB - GROUND 1:1000



HAWKS NEST GOLF CLUB EXTERNAL WORKS : NOTIFICATION PLAN

11953 - A17 - Rev C - 21 February 2025

Confidential. Copyright EJE.
Nominated Architect - Bernard Collins No. 4438 (NSW ARB)

0 10mm 50mm 100mm ON ORIGINAL A3

1:250, 1:1000
@ A3



Integrity
Innovation
Inspiration



EJE